

In this Edition of the VENT:

Welcome

New Chair & Deputy Chair for ISK Steering Group

Student Work Experience Programme 2016

Kawerau Container Terminal

ISK Submission to Emissions Trading Scheme (ETS) Review 2015-2016

*For queries about
ISK, please contact
Glenn Sutton*

*Kawerau District
Council,
Private Bag 1004
KAWERAU 3169*

*Ph: 07 3069038
Mob: 027 2503993
Email: glenn.sutton@
kaweraudc.govt.nz*

**We are on the
Web!**

**[www.embrace
change.co.nz](http://www.embracechange.co.nz)**

Welcome

Welcome to our third edition of the 'VENT'. In this edition I will update you on the following: the new Chair & Deputy Chair for the ISK Steering Group; progress with the Student Work Experience Programme 2016 and the Kawerau Container Terminal Research project and finally, ISK's submission to the Emissions Trading Scheme (ETS) Review 2015-2016.

New Chair & Deputy Chair for ISK Steering Group

At the recent ISK Steering Group's meeting the group unanimously voted David Turner (Sequal Lumber) as the group's new Chair and Spence McClintock (Ngati Tuwharetoa Holdings Ltd) as the Deputy Chair. Congratulations to both David and Spence. We also thank the retiring Chair, Russell George (KDC), for his contribution to the role.



David



Spence

Student Work Experience Programme 2016

We have had an excellent response from businesses interested in hosting Tarawera High School students in their workplace for a week. The businesses who have committed to the programme include:

- Allied Industrial Engineering
- CHH Woodproducts Kawerau
- Kajavala Forestry Limited
- Kawerau District Council's Parks & Reserves team and Solid Waste Management team
- Sequal Lumber
- SLH Contracting

The programme will take place during the third term holidays in late September/early October.

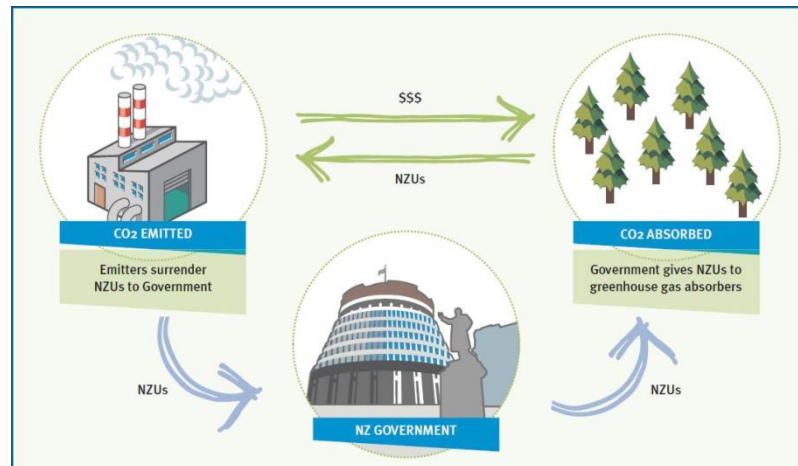


Kawerau Container Terminal Research Project

The project is underway with the Scion team currently gathering information from the individual businesses participating in the project. The team is about half way through data collection, and about the same through the base scenario modelling.

Unfortunately, we were unsuccessful with the grant application to the Agriculture and Marketing Research and Development Trust (AGMARDT). However, this does not affect or diminish the existing project.

ISK Submission to ETS Review 2015-2016



At the end of April, the ISK Steering Group submitted on the ETS Review 2015-2016. The submission focused on two aspects of the review: *Addressing Barriers To The Uptake Of Low Emissions Technologies* and *Harvested Wood Products*.

Concerning *Addressing Barriers To The Uptake Of Low Emissions Technologies* we proposed that there is real potential for New Zealand to realise significant carbon reductions in areas outside the actual ETS. Further, we submitted that Government should apply equal weight and effort to progressing/supporting these other mechanisms, which we see as including transport, bio-fuels, electric vehicles and new forest plantings.

Some of ISK's members are also associated with the Wood Council of New Zealand (Woodco). Woodco had prepared a comprehensive submission on the Review regarding *Harvested Wood Products, Managing Deferred Liability*. Consequently, we fully supported the Woodco submission in our submission.

Please contact me if you would like a copy of the ISK submission.

[For more information and updates on the NZ ETS review please see the Ministry for the Environment's website.](#)